



1 Bed
Flat
located in

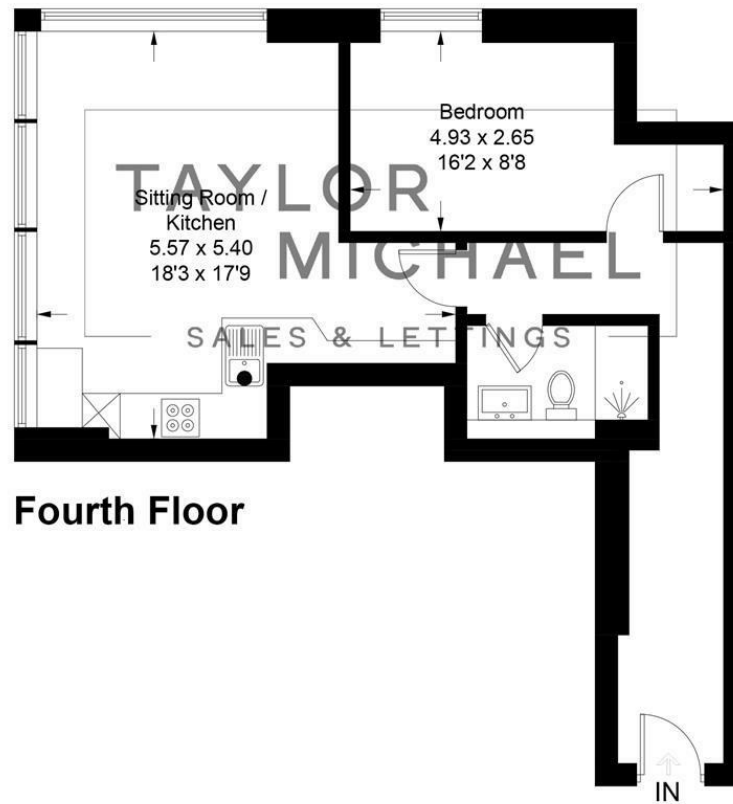
£1,250



TAYLOR
MICHAEL

Premium House The Esplanade, Worthing BN11 2BJ

Approximate Gross Internal Area = 50.2 sq m / 540 sq ft



Fourth Floor

Illustration for identification purposes only, measurements are approximate, not to scale.
Imageplansurveys @ 2025

Energy Efficiency Rating		
	Current	Potential
Very energy efficient - lower running costs		
(92 plus) A		
(81-91) B	79	79
(69-80) C		
(55-68) D		
(39-54) E		
(21-38) F		
(1-20) G		
Not energy efficient - higher running costs		
EU Directive 2002/91/EC		
England & Wales		

DIRECTIONS

CONTACT

62 Church Road
Hove
East Sussex
BN3 2FP

E: lettings@taylormichael.agency
T: 01273 600100
<https://taylormichael.agency/>

TAYLOR
MICHAEL